



THE KEY FROM HOMELESSNESS TO HOME IS YOU

A Landlord's Guide to
Serving the Community

CHAPMAN 
partnership™
EMPOWERING THE HOMELESS



Chapman Partnership manages two Homeless Assistance Centers located in Miami and Homestead. Our residents work together with case managers to create a comprehensive personalized plan, guiding them throughout their journey with us. With fully equipped medical clinics, family dorms, cafeterias, classrooms, Wi-Fi, day-care, basketball courts, and even a dog kennel – **we help provide all the resources needed for motivated residents to become self-sufficient.**



Psychiatric Services



Medical Services



Family Services



Job Placement



Housing Placement



Case Management

Our Impact

91%

Client satisfaction of staff support toward housing goals

44%

of our residents are children and families

816

nightly beds for men, women and children

150,000

lives changed since 1995

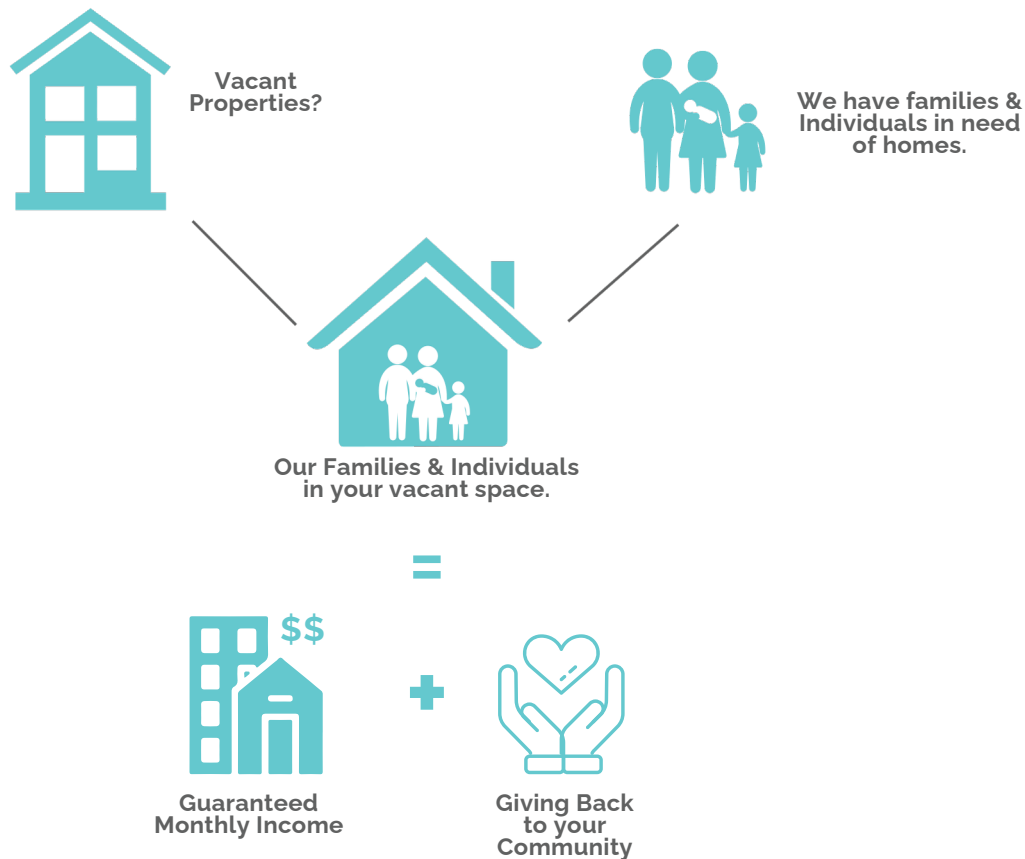
1 of the top 5 Reasons Why People Become Homeless is lack of Affordable Housing.



6 out of 10 Adult Miami Residents spend more than 30% of their income on housing. *The highest rate of any large metro in the nation.*

Together, we can end Homelessness

Chapman Partnership is looking to partner with Landlords and Realtors who can turn their vacant properties into new beginnings for our families and individuals.



Join the Network of Landlords Supporting Second Chances

If you're a landlord who believes in second chances and stronger communities, we invite you to partner with us. Chapman Partnership makes the process simple and supportive, offering:

- On-time rent payments
- Upfront security deposit and last month's rent covered
- Pre-screened tenants committed to self-sufficiency
- Dedicated support, including quick tenant replacement if a vacancy occurs
- Recognition as a Housing Partner on our website and annual report



Ready to be the next stepping stone for someone in need?

Contact Us:
Maritza Luna
Senior Director

Mobile: 305-416-7121
Email: mluna@chapmanpartnership.org

CHAPMAN 
partnership[™]
EMPOWERING THE HOMELESS



www.chapmanpartnership.org